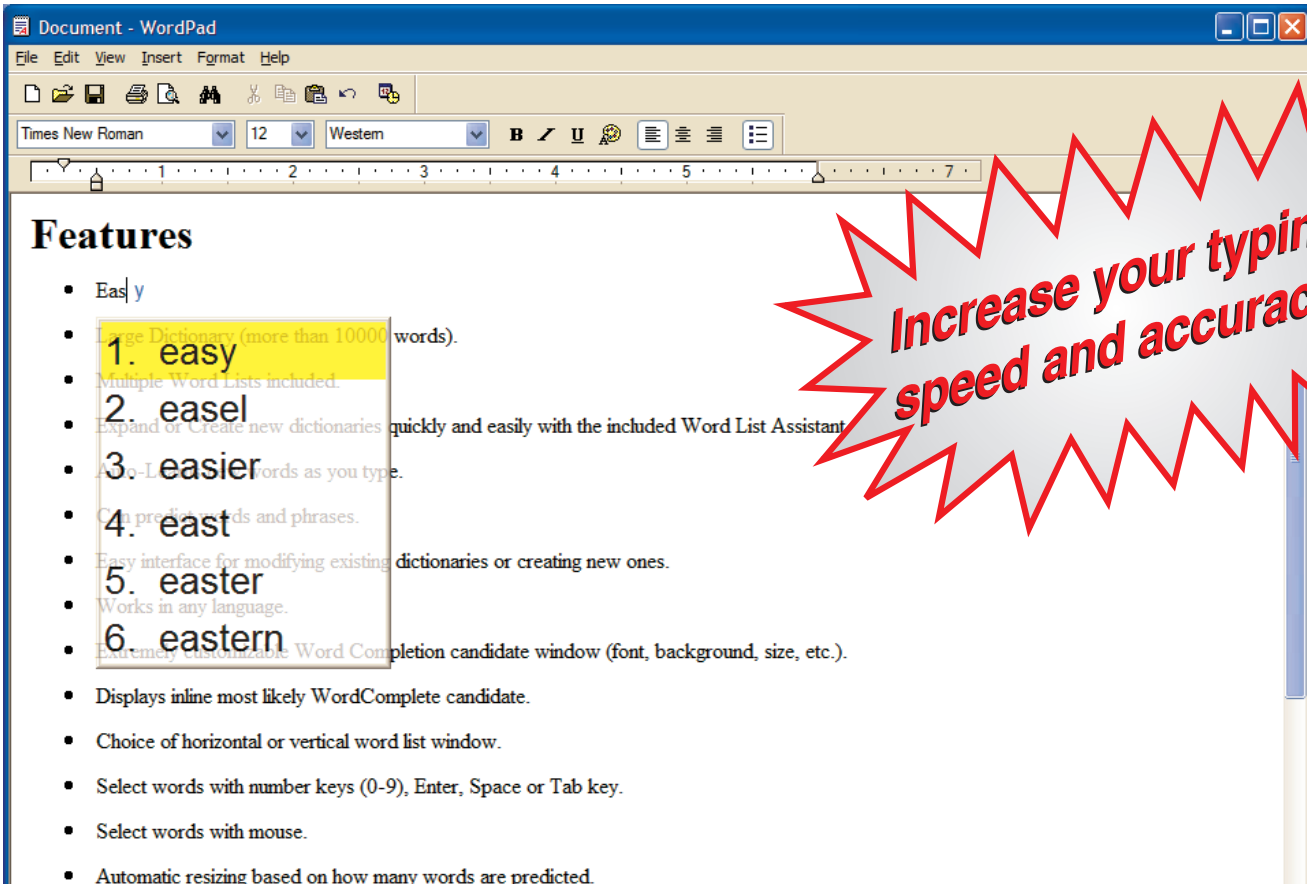


WordComplete™

Type Better, Type Less - We do the Rest!



Type Better, Type Less - We do the Rest!

WordComplete is a program that monitors user input, and predicts words as the user types. As soon as you type a character, a small window appears which displays a list of possible words or phrases (Word Candidate list). The most frequently used words are displayed first. To further assist this process, an optional second window (inline window) can be displayed, and appears next to the letters that are typed. The inline window shows the most likely WordComplete candidate "inline" (i.e. shows the ending of the word). This visually helps the user see what their completed word would look like, using the most likely WordComplete candidate.

Key Features

WordComplete includes Text-To-Speech, sentence and abbreviation support, word ending suffix support, can import word lists from documents, and provides complete control over appearance and size. WordComplete works with any application, and is ideal for use with word processors and e-mail programs. Improves spelling, typing accuracy, typing speed, and increases overall productivity!

**Productivity
Enhancement**

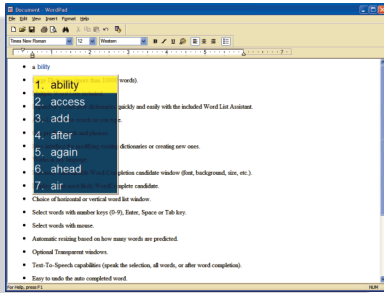


Innovation Management Group, Inc.
179 Niblick Rd #454
Paso Robles, CA 93446
www.imgpresents.com

Order: 1-800-889-0987
Office: 1-818-701-1579
Fax: 1-818-936-0200
E-mail: info@imgpresents.com

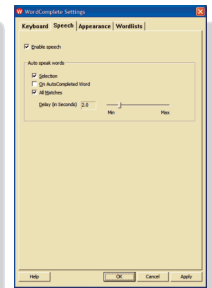
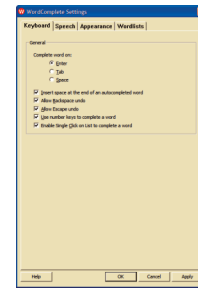
WordComplete™

Type Better, Type Less - We do the Rest!



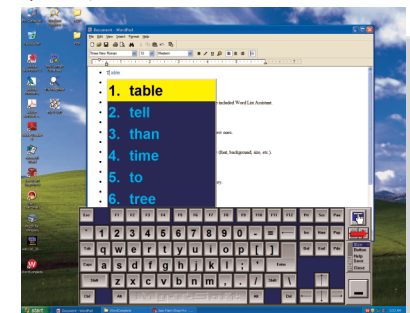
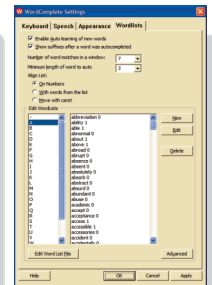
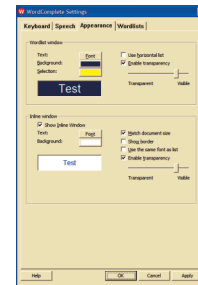
Type Better!

Adaptive, frequency sorted Word Lists
Automatically adds new words as you type
Predicts words, phrases, and abbreviations
Works in any language



Features & Functions...

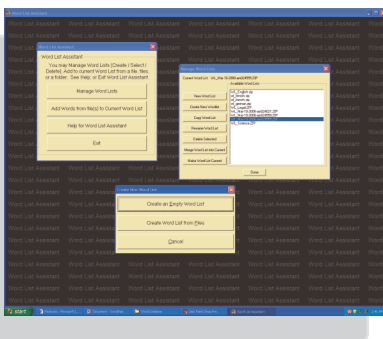
- Select words with number keys (0-9), Enter, Space or Tab key
- Select words with mouse
- Shorthand expression (abbreviations) expansion supported
- Full sentence support
- Easy to undo the auto completed word
- Automatically adds a space after auto completing word or punctuation
- Text-To-Speech capabilities (speak the selection, all words, or after word completion)
- Extremely customizable Word Completion candidate window (font, background, size, etc.).
- Displays inline most likely WordComplete candidate
- Choice of horizontal or vertical word list window
- Automatic resizing based on how many words are predicted
- Optional Transparent windows
- Can be configured for "read-only" word list operation



Word List Assistant

Large Dictionary (more than 10000 words)
Multiple Word Lists (dictionaries) included.
Expand or Create new dictionaries quickly and easily
Easy interface for modifying existing dictionaries or creating new ones

OEM versions, Individual Components,
Network and Site Licenses are available.



Supports Windows 7 / Vista / XP / 2000 USB Device operation supported
Works with Physical and Virtual Keyboards Developer tools and support

#2008130



Innovation Management Group, Inc.
Order: 1-800-889-0987
Office: 1-818-701-1579 Fax: 1-818-936-0200
Web Site: www.imgpresents.com

Innovation Management Group's Products Are Available From: